



## 3D CELL EXPLORER FLUO SLIDE REFERENCE SAMPLE

- GATTA-Cells 4C Technical features
- GATTA-Cells 4C Preview
- Imaging and maintenance best practices

## Technical features

<b>Type</b>	GATTA-Cells 4C
<b>Cell type</b>	Cos-7
<b>Labelled compartment and available fluorophores</b>	Nucleus: DAPI Mitochondria: Anti-Tom20 with Oregon Green 488 Microtubules: Anti-Tubulin with TMR Actin: SiR
<b>Embedding media</b>	ProLong Diamond 1.47 RI

## Why this sample?

- ✓ Easy to transport and maintain
- ✓ High photo stability with shelf lifes of at least 6 months
- ✓ High performance during demo for Refractive Index (RI) and all four fluorescence channels
- ✓ Fundamental cellular features displayed (i.e. Nuclei, Mitochondria, Membranes)
- ✓ Recognized as standard on the market to assess fluorescent microscopes
- ✓ Perfect as positive ctrl during fluo acquisitions

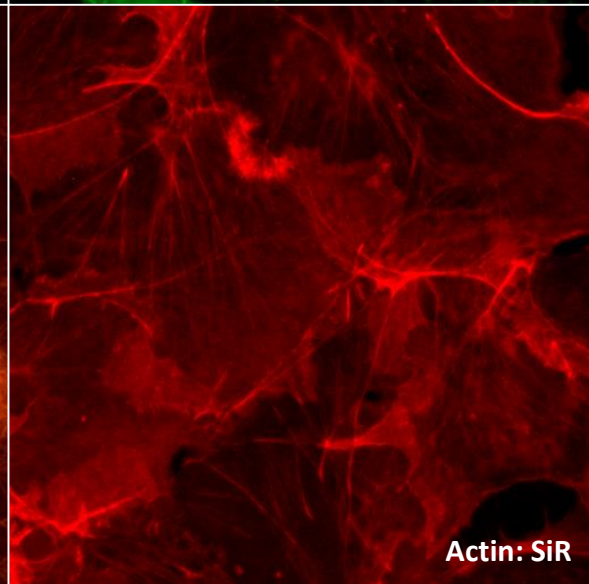
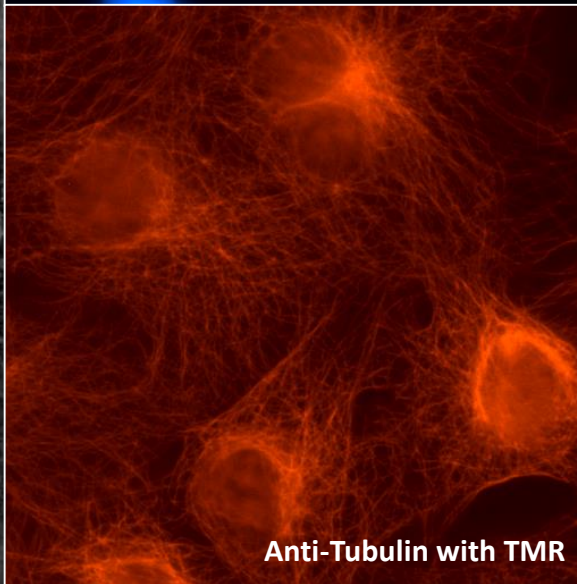
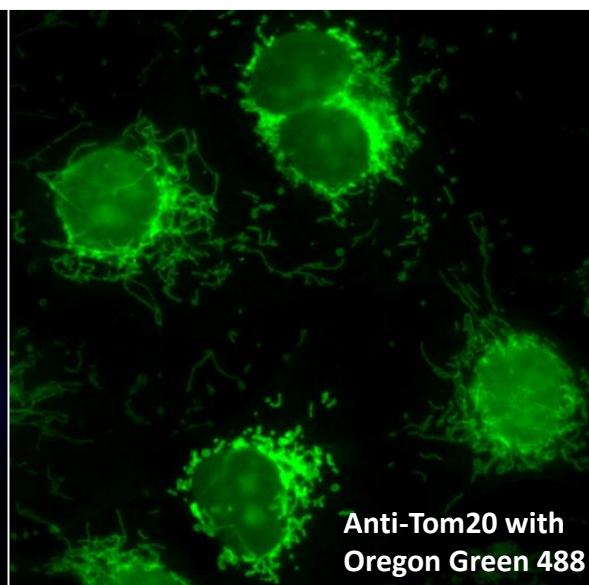
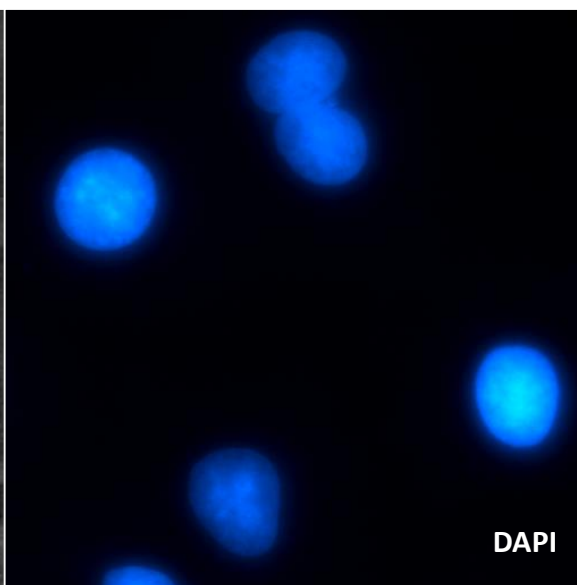
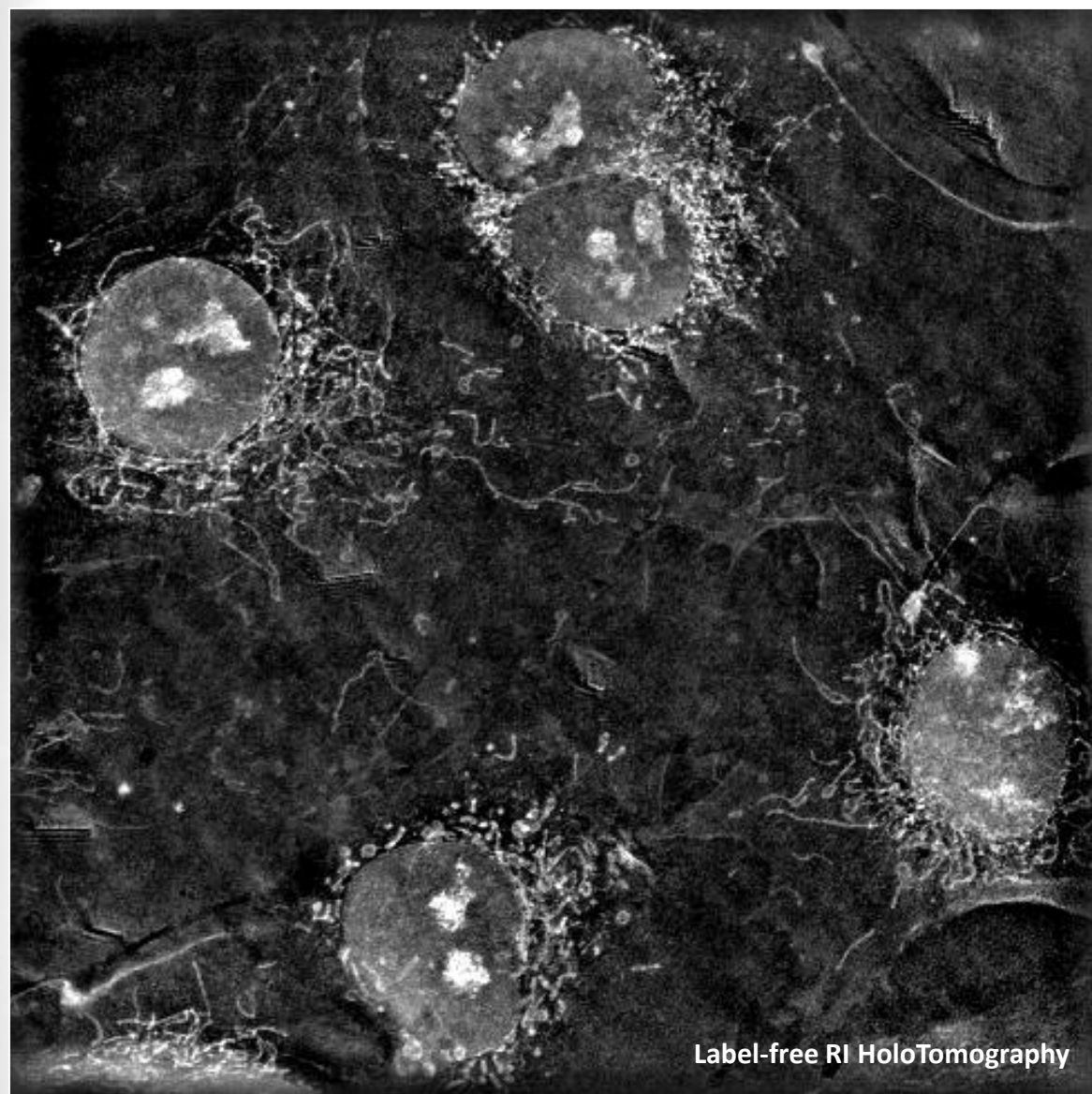
More info: <http://www.gattaquant.com/files/GATTA-Cells-EN-06-09-2018.pdf>

Buy here: <http://www.gattaquant.com/products/gatta-cells.html>



## 3D CELL EXPLORER FLUO SLIDE REFERENCE SAMPLE

- GATTA-Cells 4C Technical features
- GATTA-Cells 4C Preview
- Imaging and maintenance best practices

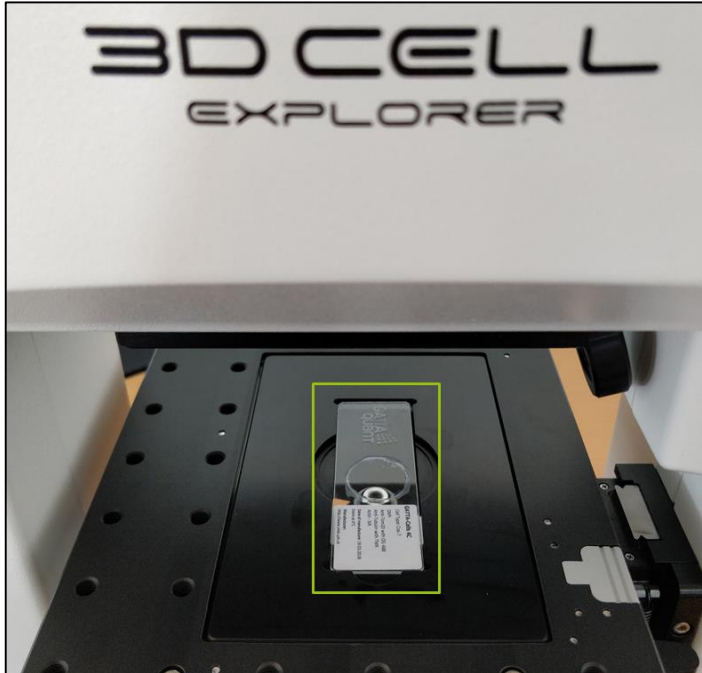




## 3D CELL EXPLORER FLUO SLIDE REFERENCE SAMPLE

- GATTA-Cells 4C Technical features
- GATTA-Cells 4C Preview
- Imaging and maintenance best practices

## IMAGING CONDITIONS



- ✓ Image the slide face up as displayed on the photo
- ✓ Minimize the exposure to room light: do acquisitions turning of room light and in case protect microscope with a opaque cover
- ✓ Optimize LED intensity and exposure time to preserve fluorophores lifetime

## STORAGE



- ✓ Storage at +4 °C (fridge)
- ✓ Avoid thermal and mechanical shocks
- ✓ Clean gently both side with >75% ethanol and lens cleaning tissues
- ✓ Store in a dark place, during travels protect with tinfoil