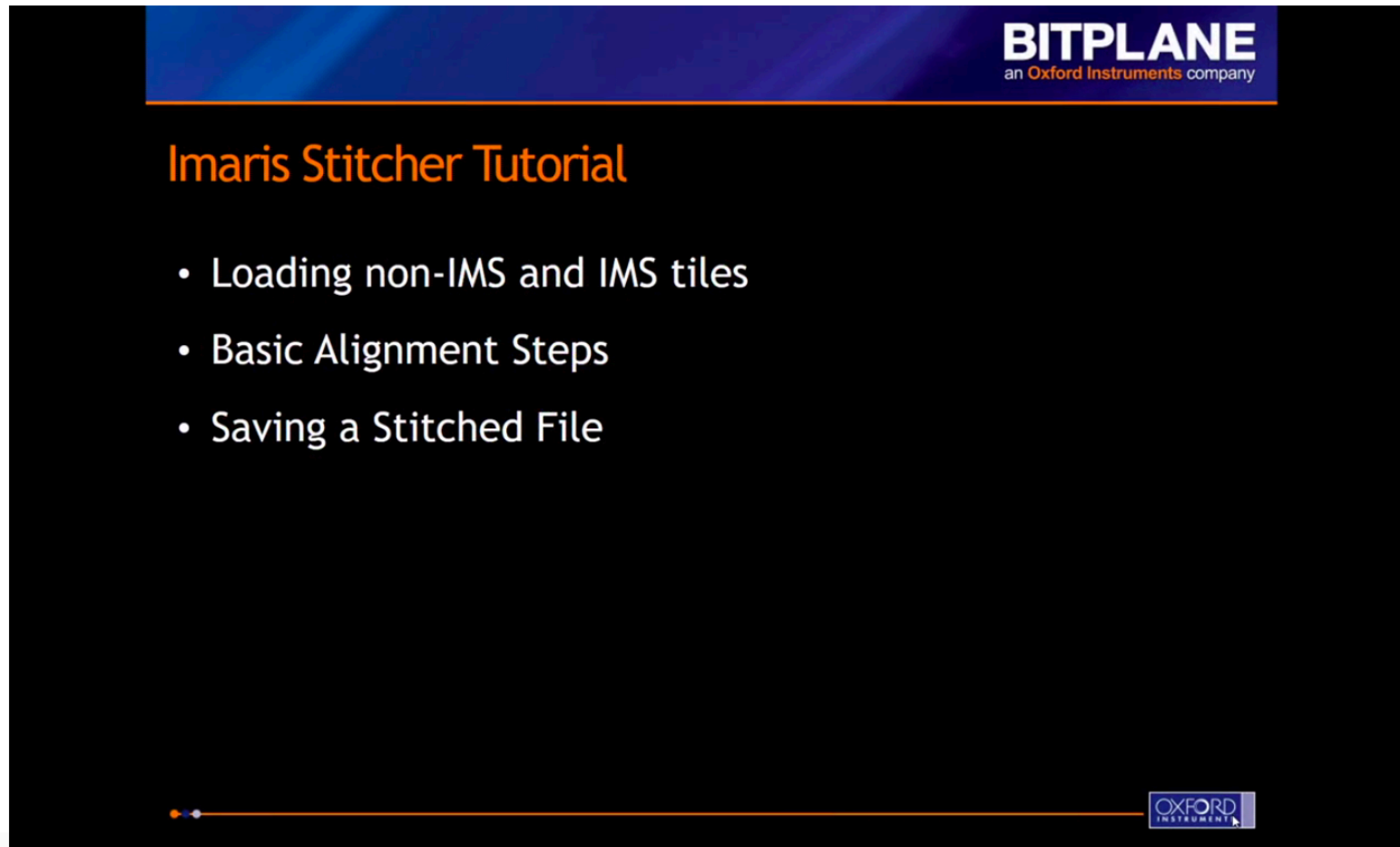


Imaris Sticher Introduction

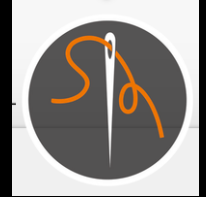
<http://www.bitplane.com/learning/imaris-sticher-introduction-video-tutorial>



The screenshot shows a video player interface for the 'Imaris Sticher Tutorial'. At the top right, the 'BITPLANE' logo is displayed with the tagline 'an Oxford Instruments company'. The main content area has a black background with the title 'Imaris Sticher Tutorial' in orange text. Below the title, there is a bulleted list of topics: 'Loading non-IMS and IMS tiles', 'Basic Alignment Steps', and 'Saving a Sticher File'. At the bottom right, the 'OXFORD INSTRUMENTS' logo is visible. A progress bar is located at the bottom left of the video frame.



ImarisFilesConverter 9.1.2



ImarisSticher 9.1.2

If the files are not at the Imaris format (non IMS)

ImarisFilesConverter 9.1.2



Imaris File Converter

Input

Drag & Drop Files, or click Button below to add Files.

Add Files...

Output

Same Folder as Input File

Specific Folder: /Users/molodij/Documents/ Browse...

Input	Output
-------	--------

Selected Input File

Settings...

Remove Selected

Remove All

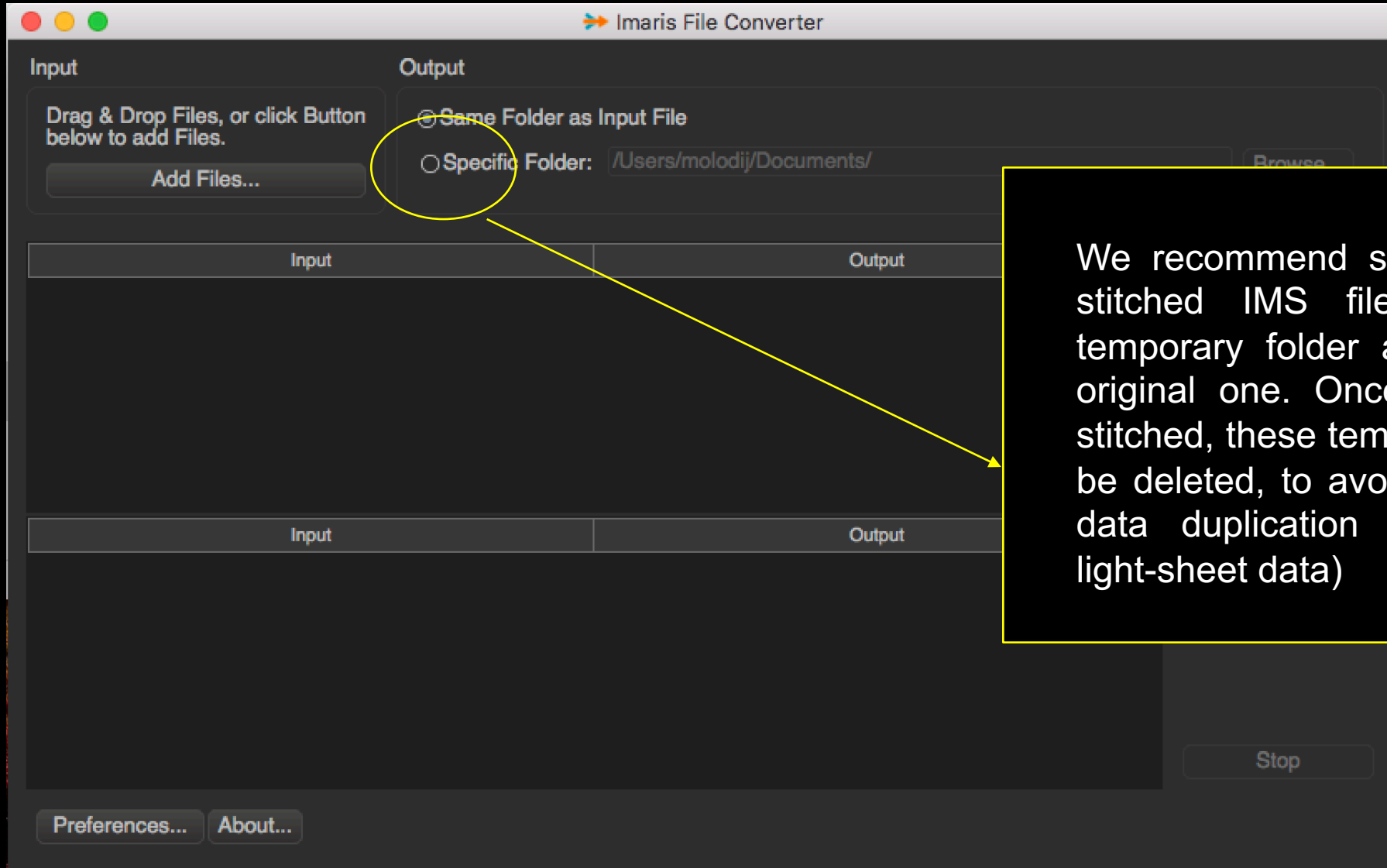
Start All

Stop

Preferences... About...

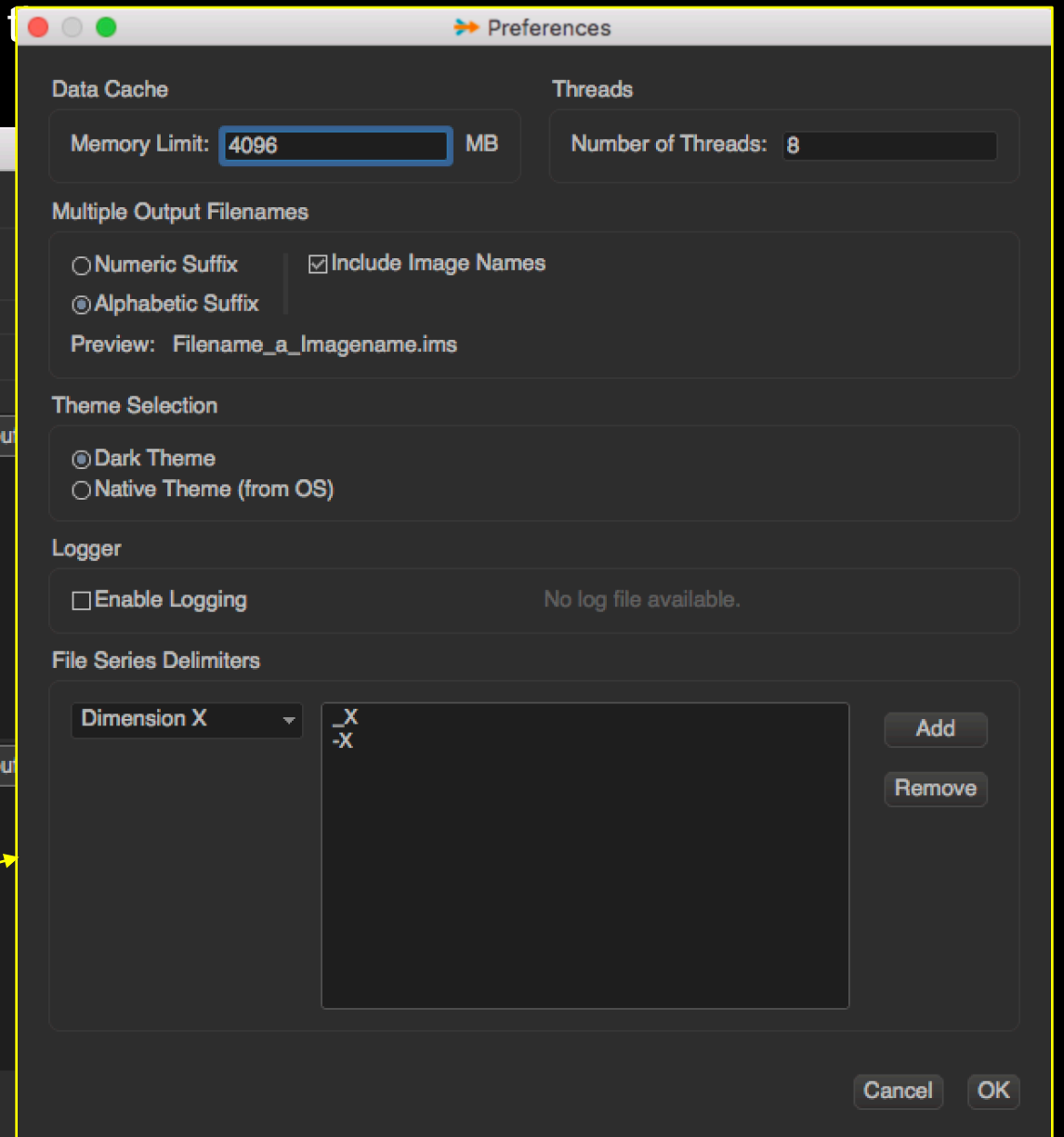
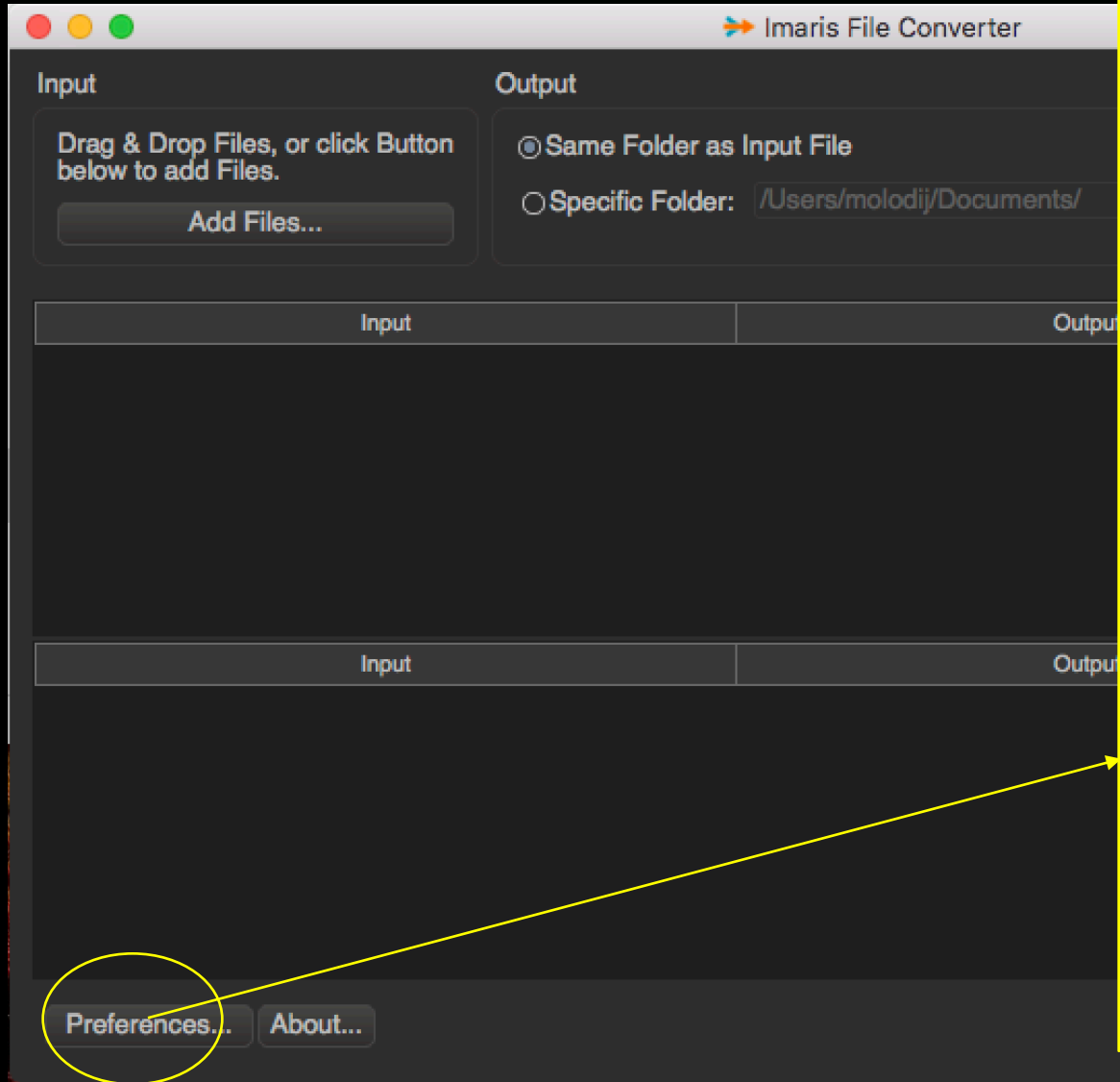
If the files are not at the Imaris format (non IMS)

ImarisFilesConverter 9.1.2

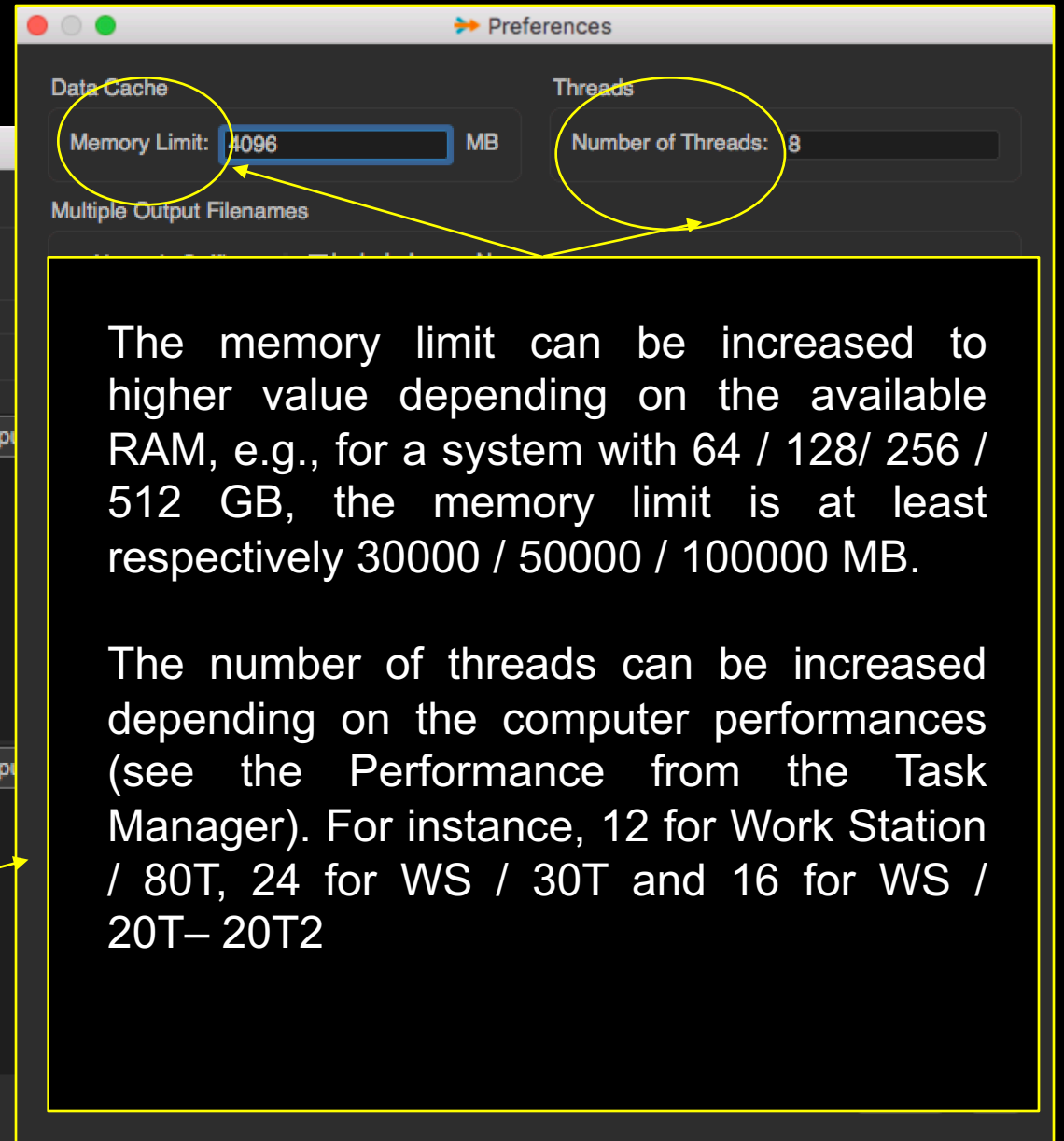
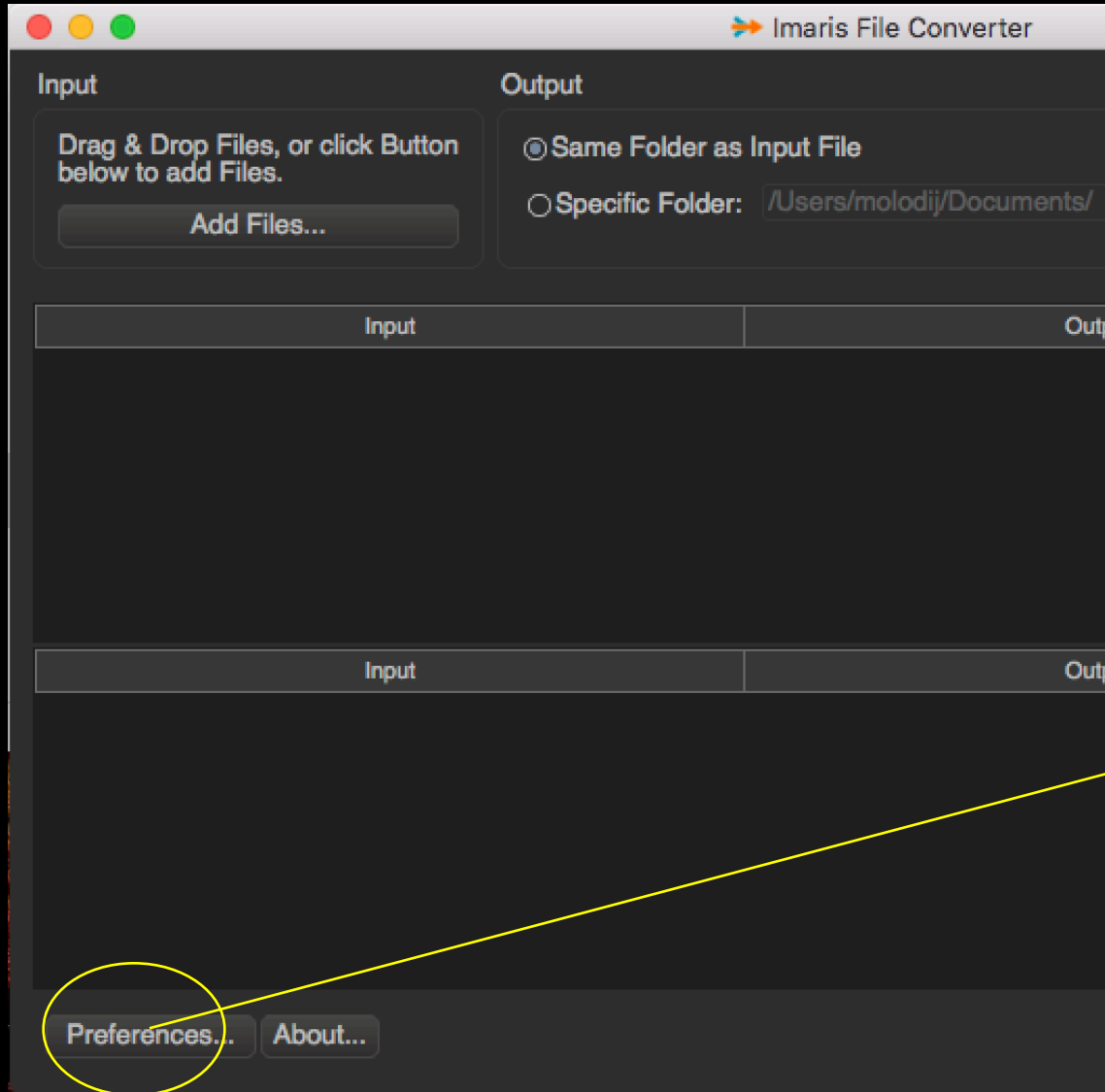


We recommend saving the non-stitched IMS files in another temporary folder and not in the original one. Once the files are stitched, these temporary files can be deleted, to avoid unnecessary data duplication (especially for light-sheet data)

Possible set in the preference to get the metadata from the first file of sequences (but not fully operational)



Possible set in the preference to get the metadata from the first file of sequences (not fully operational)



Input

Output

Drag & Drop Files, or click Button below to add Files

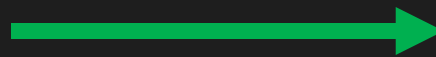
Add Files...

Same Folder as Input File

Specific Folder: D:\kate drop Dr\New folder

Input	Output
-------	--------

TIF



IMS

Input	Output
-------	--------

C:\Users\m.price\Desktop\Imaris Stitcher tiles\LIF\Example.tif

C:\Users\m.price\Desktop\Imar...e_a_brain1 (Stage 1 of 4).ims

78%

78%

Upload the first files of each Field Of View (in case of multiple FOVs saved in independent files, such as LaVision Ultra microscope)

Preferences...

About...

Alignment of IMS tiles with ImarisSticher

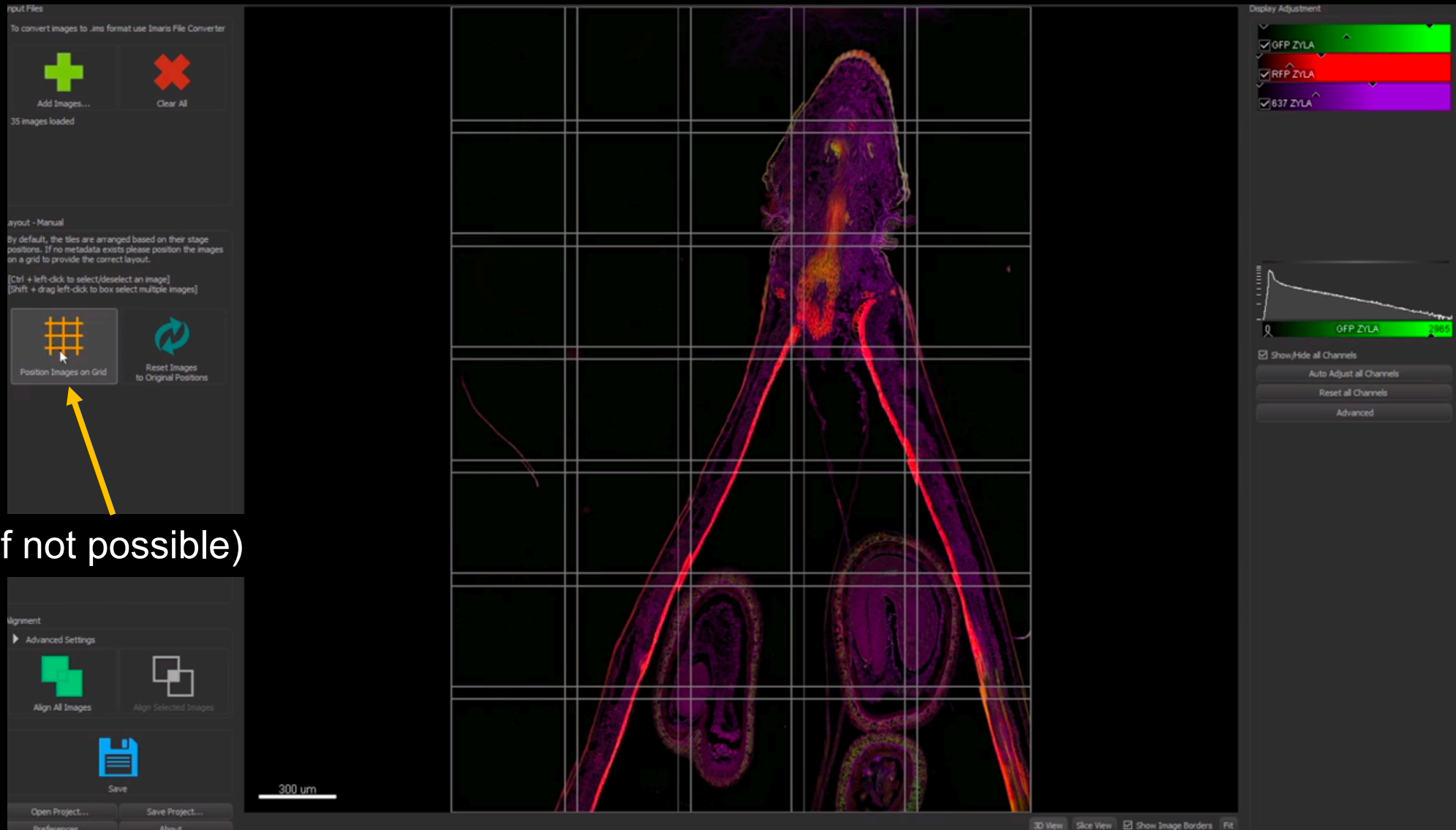


The screenshot shows the ImarisSticher software interface. A yellow circle highlights the 'Add Images...' button in the 'Input Files' section. A yellow arrow points from the text 'Add the files' to this button. Another yellow arrow points from the text 'Add all the IMS files to start' to the same button. The interface includes sections for 'Layout - Manual', 'Alignment', and 'Display Adjustment'. The 'Alignment' section has buttons for 'Align All Images' and 'Align Selected Images'. The 'Display Adjustment' section has buttons for 'Auto Adjust all Channels', 'Reset all Channels', and 'Advanced'. At the bottom, there are buttons for 'Open Project...', 'Save Project...', 'Preferences', and 'About'.

Add the files

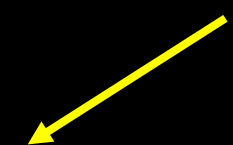
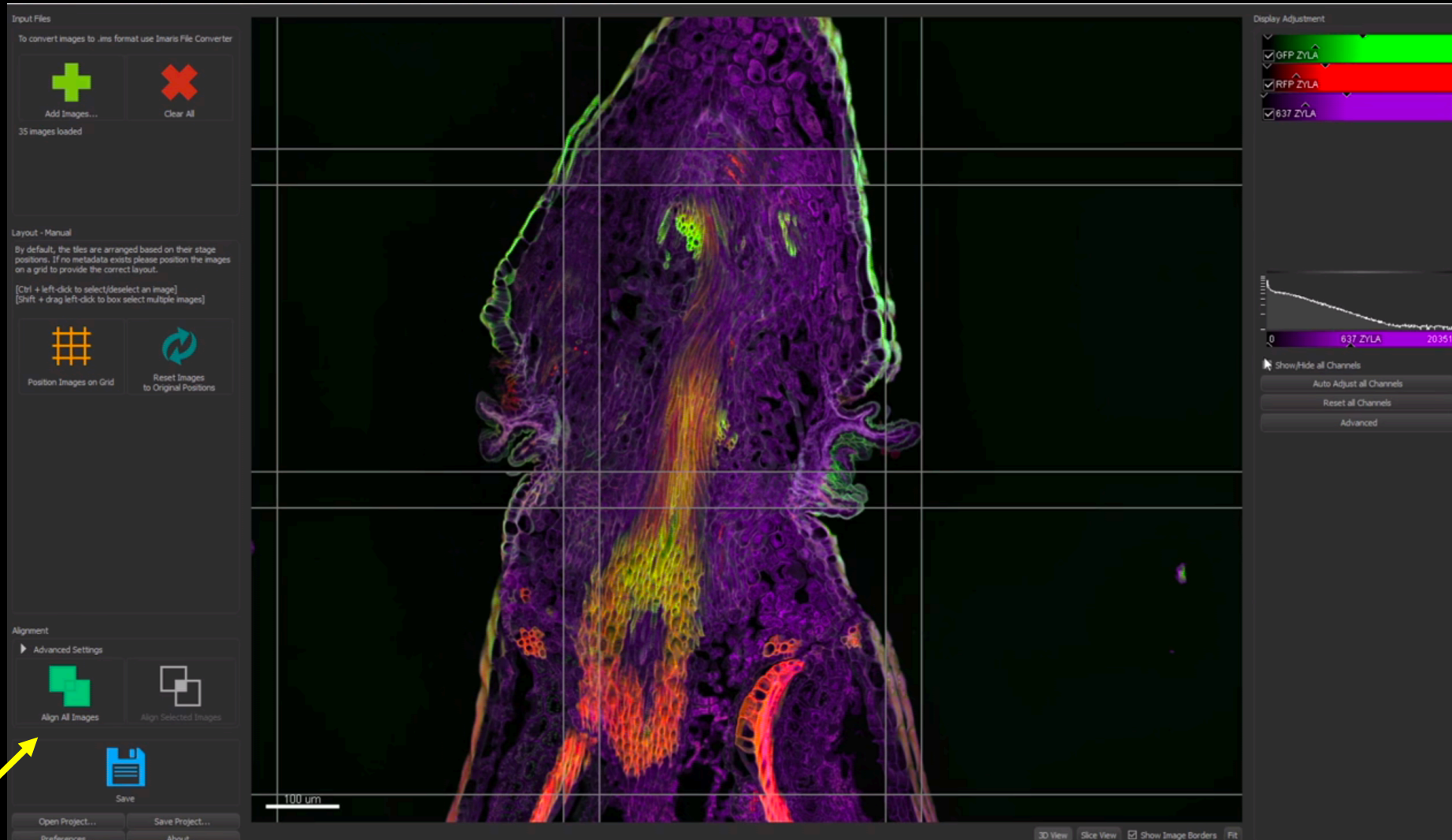
Add all the IMS files to start

Automatic ordering of the tiles from the metadata of the files (if possible)



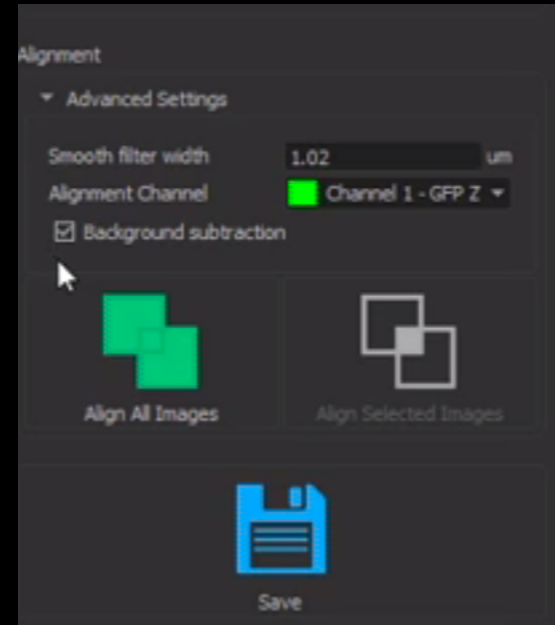
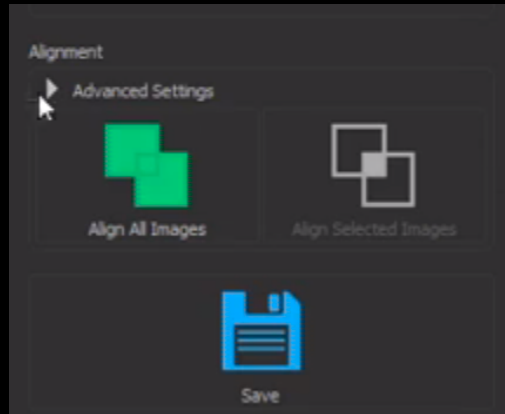
(if not possible)

Display adjustments



Then align

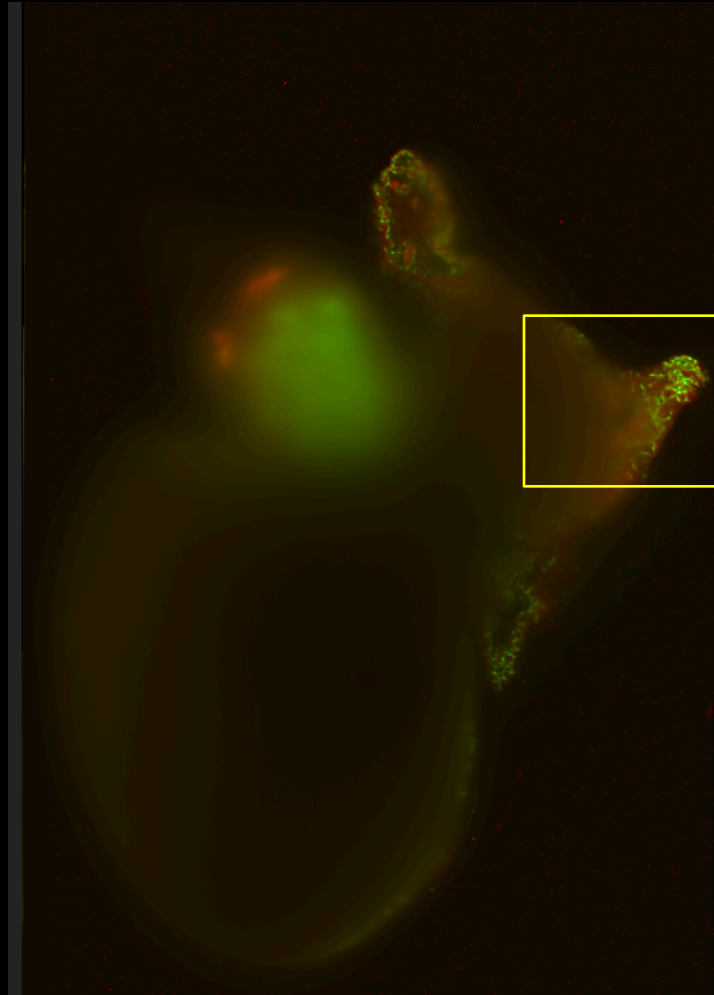
Settings for Alignment



Select the channel that displays the most details in the volume (use the 2D slice mode view to check)
No need to waste time in tune the filter parameter width (the optimum stitching is applied when saving)

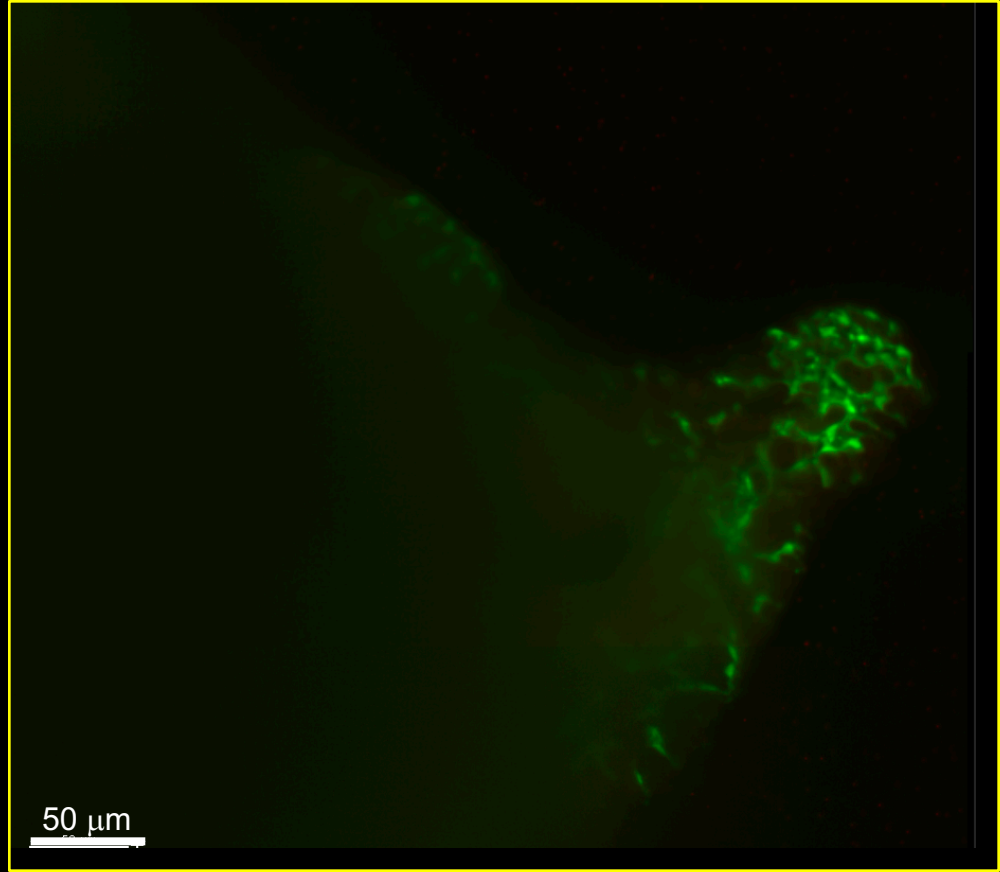
Settings for alignment

Example using the 2D slice mode view



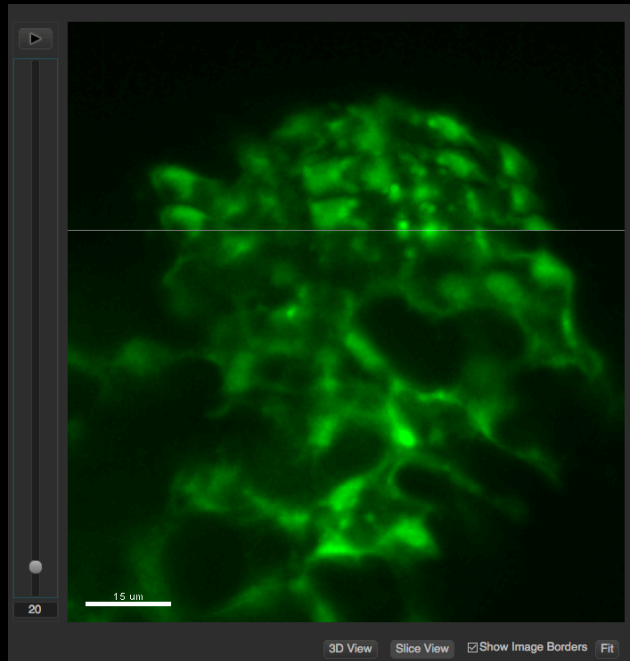
Alignment settings panel:

- Smooth filter width: 1.02 μm
- Alignment Channel: Channel 1 - GFP 2
- Background subtraction
- Buttons: Align All Images, Align Selected Images, Save

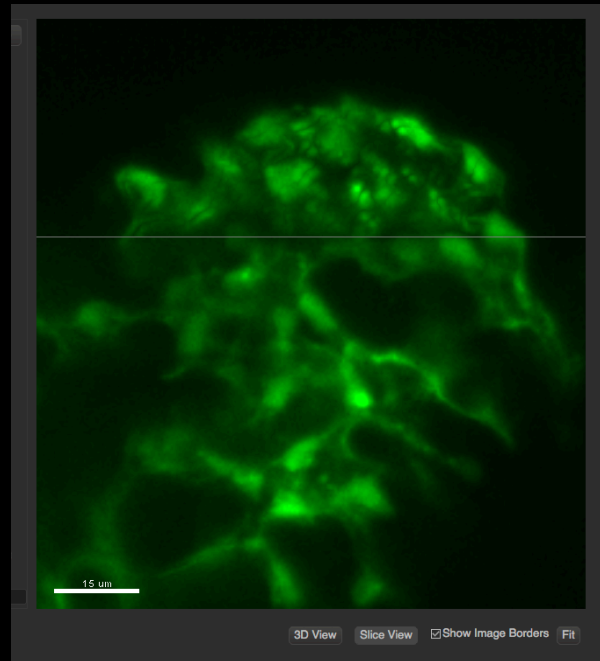


Settings for Alignment

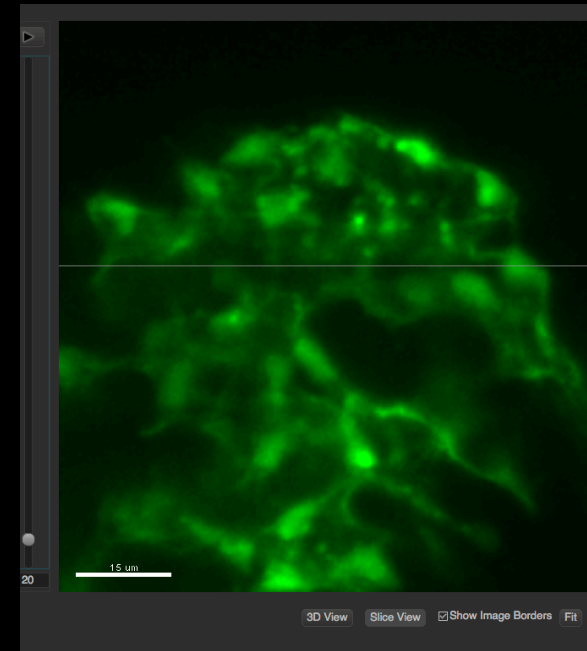
Note that the alignment shown at screen is not an indication of the final result obtained only after the saving



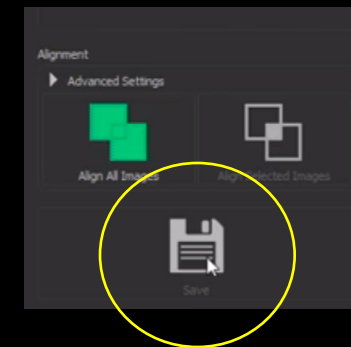
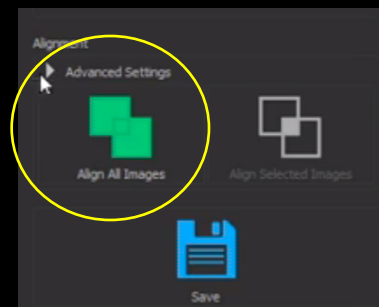
Before alignment



After alignment



After saving



Display of the result after the saving
Automatic opening as a project with Imaris
(unselect in the preference if no license is available)

